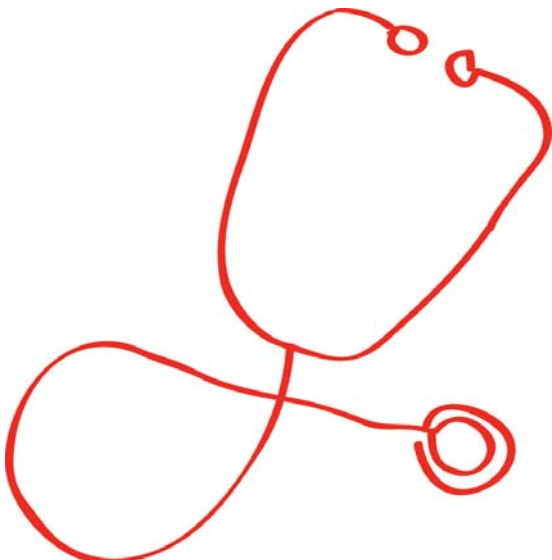


Network Health Check

Discover what's on your network.

Logicalis' automated network audit, or **Network Health Check**, provides a **nonintrusive and non-disruptive assessment of enterprise networks**.

The Health Check delivers accurate analysis and advice on network devices, including comprehensive reporting software levels, EoL milestones and support coverage. The comprehensive reports provide a valuable tool for optimising the network and capacity planning.



What Does it Tell You?

- A Health Check delivers accurate analysis and advice on Cisco devices, including comprehensive reporting software levels, EoL milestones and support coverage. It also quantifies any risks associated with aging network infrastructure.
- Identification of software and hardware which is at obsolescence / End of Life
- Identification and isolation of risks to network optimisation
- Ability to standardise router and switch releases within the network
- Guidance for migration and upgrade strategy planning
- Creation of a foundation for network administration best practices
- Documentation of all serial numbers.

- 43% of network equipment examined at 150 major companies is at end of life
- End of life equipment typically costs more to maintain and is more prone to downtime.



Scope

- **Discover current network state.** Gathered information is encrypted and correlated against a database of device information and advisories.
- **Identify what is required:** Logicalis engineers review the data to quantify any risks and provide recommendations for any upgrades or remedial action required.
- **Procurement offers:** Where products are End of Support or not supported, Logicalis will recommend the most cost-effective upgrade options or maintenance offerings.

Deliverables

The Network Health Check provides a non-intrusive and non-disruptive scan of the network, and compares the details of every Cisco device against databases of software releases, advisories and support information.

The output is a number of detailed reports and recommendations:

- **Inventory Profile Report (IPR)** provides an assessment of all hardware devices found in the customer's network, including various Cisco platforms such as routing, switching, WAN, firewalls, IP telephony and non-Cisco devices. It includes an Executive Overview and Software & Hardware Summary.
- **Logicalis' analysis** is conducted by a technical consultant and presented in a high-level Network Health Check Overview PowerPoint presentation.

What can we do for your organisation

Contact Logicalis to learn how we can help.

Visit
www.au.logicalis.com

Call
1800 453 454